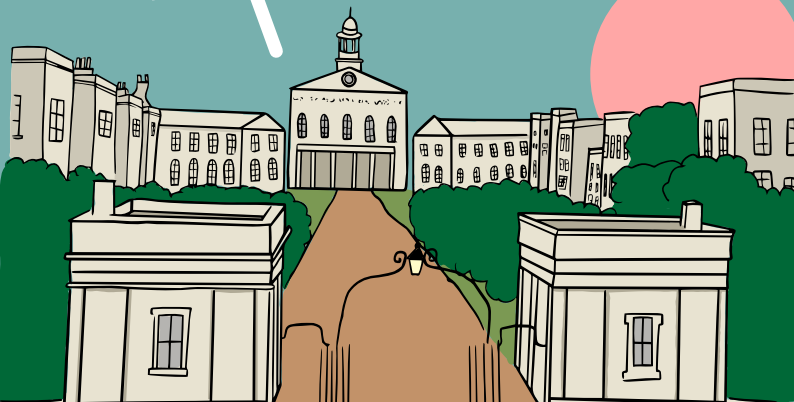


Missionaries & Jews in 19th c London

Illustrated History Map

by Jemima Jarman



1.

Palestine Place **Cambridge Heath Rd**

In 1813 the London Society for Promoting Christianity among the Jews (LSPCJ) purchased a 100-year lease on five acres of land here on Cambridge Heath Road upon which they built an impressive complex including chapel, schools, offices, workshops and accommodation. The lease was sold to Bethnal Green Board of Guardians in 1895.

2.

St. Stephen' s School **Buildings** **Quaker Street**

On the corner of Commercial Street and Quaker Street there once stood St Stephen' s School, part of the parish of Christ Church, which was used the LSPCJ mission to host a free night school for Jewish children.

3. Hebrew Conference Hall **Old Montague St**

LSPCJ rebuilt the original mission hall that was run by the London City Mission in the 1870s and 80s. As more immigrant Jews settled in the area, the LSPCJ partnered with LCM to open the Hebrew Conference Hall in 1890. The building was used for Gospel services, classes for Jews, mothers' meetings and evangelistic social gatherings.

4. Medical Mission **4 Goulston St**

LSPCJ ran a medical mission to Jews three times a week from 1891. Their doctors and dispensers saw patients here, within the newly built Church and School buildings belonging to the German Protestant Church of St.Pauls.

5.

Christ Church Hall

(Hanbury Hall) Hanbury Street

A dispensary in which a missionary doctor could be seen, and medicines administered without cost to Jewish patients could be found within Christ Church Hall, now named Hanbury Hall. The LSPCJ had close connections with Christ Church, Spitalfields and this was just one of their collaborative efforts.

6.

LSPCJ' s Schools Streatham Common

The LSPCJ mission schools for Jewish children were a run as part of Palestine Place from 1814. After Palestine Place was sold in 1895, the schools were relocated to Streatham Common.

1.

Night School for Jewish Children

36 Wellclose Square

Mildmay Mission to the Jews established a mission hall here in 1876. They held regular services in Hebrew and German, invited local Jewish women to attend mothers' meetings and ran a night school for Jewish children.

2.

Medical Mission

Hooper Sq, Leman Street

The first location for MMJ's medical mission was on Leman Street, just off Hooper Square. It opened in 1880 and was run by Dr. John Dixon. It was popularly attended by the local Jewish community and had to move to larger premises several times.

3.

Medical Mission

4 Goulston St

The second location for MMJ's medical mission was the newly built Church and School rooms of the German Protestant Church of Goulston Street. Dr Dixon conducted his practice here 1887-1891.

4.

Convalescent Home for Jewish Men

50 Langdon Road

In 1884, MMJ added a Convalescent Home to their mission's operations. Based in leafy Highgate, far from the overcrowded slums and workshops of the East End, this home offered 8 beds to Jewish men in need of rest and recuperation.

5.

Boarding House for Jewish-Christian Young Men

10 Northwood Road

Mildmay Mission to the Jews ran a Boarding House for Jewish-Christian Young Men here at 10 Northwood Road, Highgate.

6.

Central Mission Hall Philpot St

In 1890, MMJ purchased a large building on Philpot Street that had previously been St. Andrew's Church. It reopened as the centre of MMJ's missionary operations under the name of "Central Hall" in 1891.

1.

BSPGJ Mission Hall

Church St, (then Fournier St)

The British Society for the Propagation of the Gospel amongst the Jews was founded in 1842; however it did not have it's own mission hall until 1879 when it opened a medical mission and dispensary here on Church Street (then Fournier Street).

2.

Home for Aged Israelites

Ferntower Rd

This institution to care for elderly Jewish converts was founded in 1872 by John Wilkinson, a former employee of BSPGJ before he left to establish his own independent mission in 1879 (MMJ). However, even after leaving BSPGJ, the responsibility for this Home remained in his care.